

RNI Reg. No. ODI ENG/2013/53569

THE NEPTUNE

GLITZ

VOL · 7 | ISSUE · 76 | FEBRUARY · 2020 | ₹ 100

architecture
& interiors

Saundha Gharaunda

Panipat, Haryana

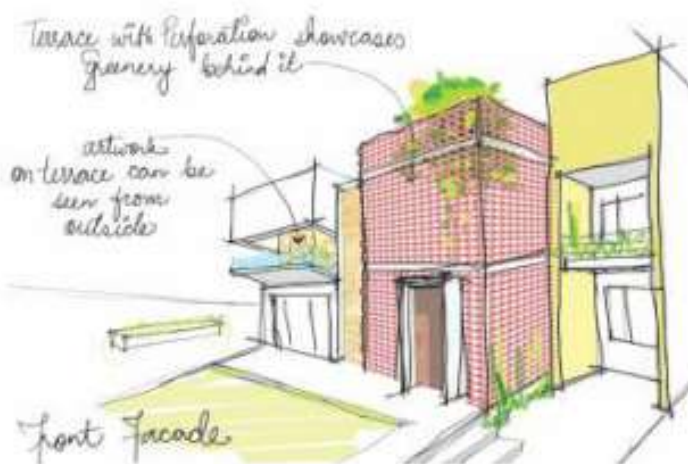
Ar. Ankita Sweety & Ar. Pratyoosh Chandan

project



Saundha Gharaunda

Panipat, Haryana





Starting with a brief as simple as a house that breathes, "Saundha Gharaunda" is an attempt to resonate the characteristics of a very charming & humble couple who are about to embark upon retired life at a place they intend to call their home. Placed within a plotted development, very near to a National Highway in the city of Panipat, Haryana, "Saundha Gharaunda" sits within a boundary of a 350 Sq Yard Plot facing the West Direction.

Standing between two adjacent plots on both sides, the Front Facade greets you with warmth & simplicity. The Boundary finished with stacked Dholpur Stone, has a floating planter with multiple segregated MS Jalis to hold the climbers, embedded within a concrete frame. Staggered rectangular volumes add character to the Facade, dressed with a play of a double height Brick Jali, a semi-enclosed Terrace Garden & a recessed private balcony. Rectangular pores of varied scale runs throughout the facade, emerging as an inviting threshold between the Outdoor & Indoor spaces.



In principle, the planning of this house has an invert looking character, where the central open to sky courtyard becomes the focal point and every other space is planned around it. This Moonlit courtyard in the night gets flushed with sunlight during the day bringing inside an ever charming energy at all times. The Court's enclosure is made of retractable Glass & Aluminium Partitions, for it to become the indoors when needed or stay as an outdoor space within the indoors at one's discourse.







The entry to the house brings you inside a Foyer with a Powder Room enclosed within Brick Jali. The Foyer is then guided through linear lines on the Floor & the Ceiling, taking you to a formal Living Room, which then opens its arms wide towards the Central Courtyard. A raised Puja Sthal along the passageway sits between the formal Living Room on one side & the Dining Area on the other while glancing over the Court. A Family Lounge leading to the rear Lawn, is placed adjacent to the dining area. This floor also houses the Kitchen, a Staircase and a Master Bedroom with dress & a washroom.





The Staircase with a black & white story board on its wall, lands you onto a Bridge at the Upper Floor Level. This L-Shaped Bridge leading to 2 Bedrooms for the 2 daughters of the Couple as well as the Terrace Garden, sits within a Double Height Dining Area, Open to Sky Courtyard & a Staircase. A Kitchenette is placed at one end of the Bridge to cater to two Bedrooms & the Terrace Garden on this Floor.



Ankiti Sweety

A passionate young woman, who has made a name for herself in the Design Fraternity of the Country through her pure indulgence in Creativity & Art. With a never-ending craving for excellence in design & an eye for detail, Ankiti has envisioned & shaped various projects of a variety of scale, size & manner. Conferred as one of India's Top 50 Young Designers by the iGEN Design Forum, 2014, she also holds a position among India's Top 100 Design Divas channelled through Decowood in association with Good Homes & Trends Design Magazine. She has also been a proud recipient of WADE Asia Awards, 2018 in Healthcare Category. Her flamboyant confidence of style & her constant urge to excel has led the Studio to win numerous Design Awards.



FACT FILE:

Location : Panipat, Haryana
Client : Naresh Sardana
Design Firm : Studio An-V-That Architects Pvt. Ltd.
Design Team : Ankita Sweety, Pratyosh Chandan, Ridhima, Gaurav, Shanmukh, Sujata, Tavleen, Abhinav
Built-up Area : 2650 Sq ft
Completion : May 2019
Picture Credits : Aadit Basu



Pratyosh Chandan

An inquisitive dreamer, Pratyosh has always been compassionate towards people & surroundings, which led to the birth of Studio AVT with the driving principle to breathe at its core. Being an alumnus of Mayo College, Ajmer, & spending most of his early years in the Heritage city of Jaipur, the sense of magnificent Architecture is deeply embedded in him. He is also conferred as one of India's Top 50 Young Designers by the iGEN Design Forum, 2014. His passion for new technology & contemporary construction methodology has helped the firm to gain nation-wide reputation. He has also been a member of the Jury consecutively for three years since 2014 at Design Wall, for ACETECH, New Delhi, Asia's largest Construction & Building Material Exhibition.





The Terrace Garden on the First Floor is a story with many characters, with each character playing its part to bring forth a serene experience. Design intentions to fragment the harsh sunlight & filter the South-West heat gain in order to create a pleasant environment, led to the creation of a variety of guiding pores for sunlight to remain in restrained capacity while giving shadows a sense of dimension. A wall with Circular Punctures, Brick Jali Wall, Stacked Bamboo Sticks, Suspended Jali in MS Sheet and Champa Plants come together to bring comfort from Sun while forming a beautiful composition together. A hand-painted Artwork using Zentangle method onto a wall defining the stretch of this terrace, cheerfully becomes the centre of attraction bringing youthful energy to the whole area. Splashes of Yellow, Peach & Orange onto intertwined circular patterns help to establish a sense of Joy amongst the inhabitants. The Terrace Garden on this Floor also has a beautiful & interactive relation with the Central Courtyard on the Ground Floor by being placed adjacent to each other.



The complete house has a minimalistic approach for interiors so that focus is not diverted from courtyards & green spaces. These green spaces have a power to continuously change their nature because of sunlight & natural landscape. Every day, every minute, the view in the frame changes keeping it surreal & unaffected with the artificially done up things keeping the earthen raw nature at its core. 📸

Courtesy: Studio An-V-That Architects Pvt. Ltd.

